

## 1. Product: Matirx™ Coated Ware

SPLCoat™ offers a number of technologies optimized for enhanced cell attachment and growth of fastidious cells, (e.g., primary cells, neuronal cells, endothelial and tumor cells) which may not easily adhere to or differentiate into specialized cell types on traditional surfaces. Its major components are laminin, collagen type IV, entactin, plasminogen activator and other growth factors which occur naturally in the Engelbreth-Holm-Swarm mouse tumor.

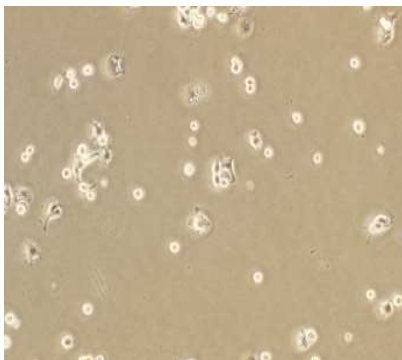
SPL Life Sciences provides a wide range of Matrix™ coated products. All Matrix™ coated products are produced with optically clear and high quality polymers for microscopy.



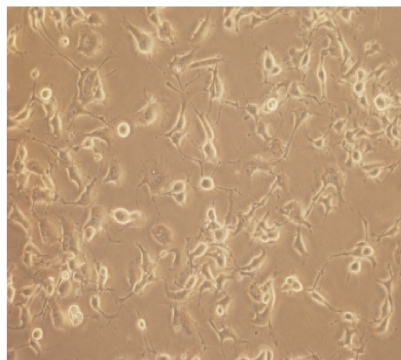
## 2. Experimental condition

- 1) Cell line: NG108-15 (mouse neuroblastoma)
- 2) Media: 10% FBS in RPMI1640(without pyruvate)
- 3) Culture condition: 37°C, 5% CO<sub>2</sub>

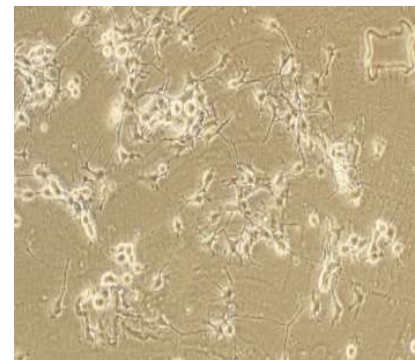
## 3. Results



Control(non-coated)



SPL Matrix™ coated ware



Competitor's ware

Figure 1. Microscopic observation of cultured cell

## 4. Conclusion

Cells cultured in presence of Matrix™ coating showed more physiologically relevant behaviors than cells cultured in non-coated surface control.

## 5. Ordering Information

Cat. No.	Material	Type/ style	External Dimension (mm)	Internal/well Dimension (mm)	Growth Area (cm <sup>2</sup> )	Working Volume (ml)	External Grip	Packaging
<b>Flask</b>								
710025	PS	Filter Cap	-	-	25.00	7.00	-	5 / 10
710125	PS	Plug Cap	-	-	25.00	7.00	-	5 / 10
710075	PS	Filter Cap	-	-	75.00	25.00	-	5 / 10
710175	PS	Plug Cap	-	-	75.00	25.00	-	5 / 10
<b>Dish</b>								
27035	PS	35.00 x 10.00	-	35.00 x 9.60	9.40	3.00	+	10 / 20
27060	PS	60.00 x 15.00	-	52.80 x 12.80	21.50	5.00	+	10 / 20
27100	PS	90.00 x 20.00	-	86.26 x 17.70	57.50	12.50	-	10 / 10
27150	PS	150.00 x 25.00	-	140.20 x 23.30	148.00	35.00	-	5 / 5
<b>Plate</b>								
39606	PS	6well	85.40 x 127.60 x 20.20	35.00 x 17.50	9.60	3.00	-	1 / 5
39612	PS	12well	85.40 x 127.60 x 20.20	22.10 x 17.50	3.80	2.00	-	1 / 5
39624	PS	24well	85.40 x 127.60 x 20.20	15.60 x 17.50	1.90	1.00	-	1 / 5
39648	PS	48well	85.40 x 127.60 x 20.20	9.75 x 17.50	0.75	0.50	-	1 / 5
39696	PS	96well	85.40 x 127.60 x 20.20	6.40 x 10.80	0.33	0.20	-	1 / 5
<b>Slide</b>								
30804	PS/GlassPP	4well	-	-	2.13	0.50 - 1.30	-	6 / 12
30808	PS/GlassPP	8well	-	-	0.98	0.20 - 0.60	-	6 / 12

[www.spllifesciences.com](http://www.spllifesciences.com)

For technical assistance, contact SPL R&D Center at:

Tel: +82-31-533-4800; Fax: +82-31-533-1430; e-mail: [spl@ispl.co.kr](mailto:spl@ispl.co.kr)

To place an order, contact your local distributor or

Tel: +82-31-533-4800; Fax: +82-31-533-1430; e-mail: [business@ispl.co.kr](mailto:business@ispl.co.kr)